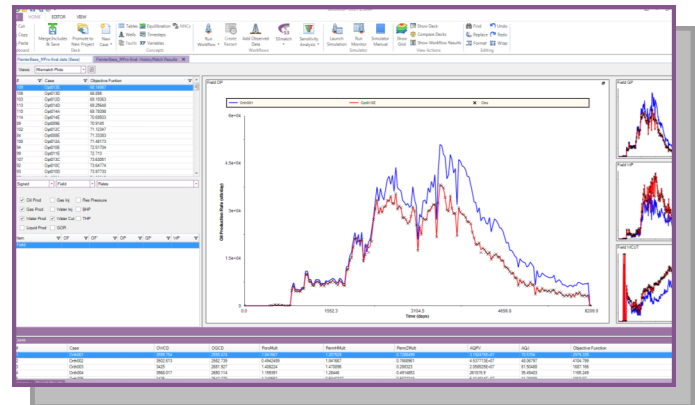
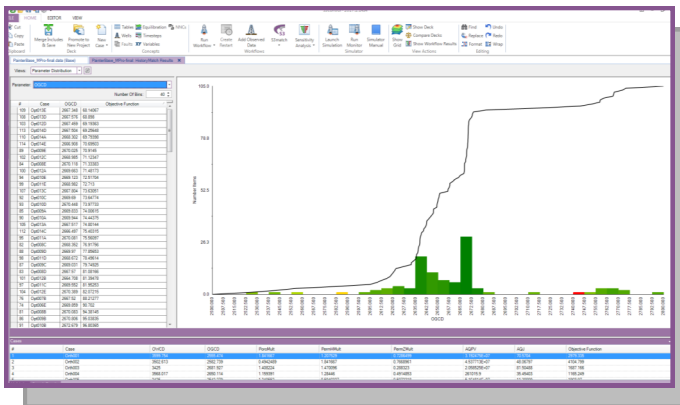
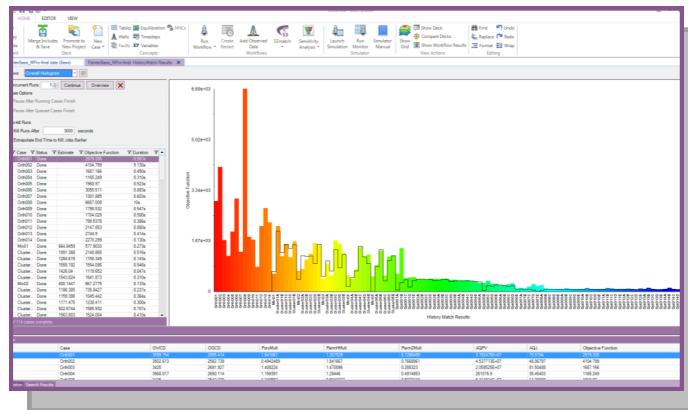


History in the matching



- **Easy to use and set up runs**
- **Powerful**
- **Cost-effective**
- **Find matches in fewer runs**

CONTROL

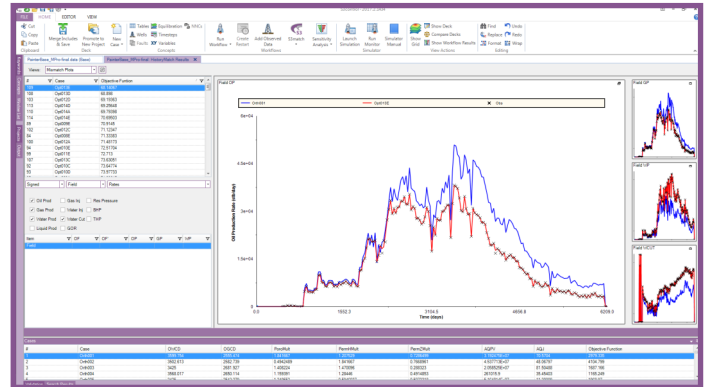
History in the matching



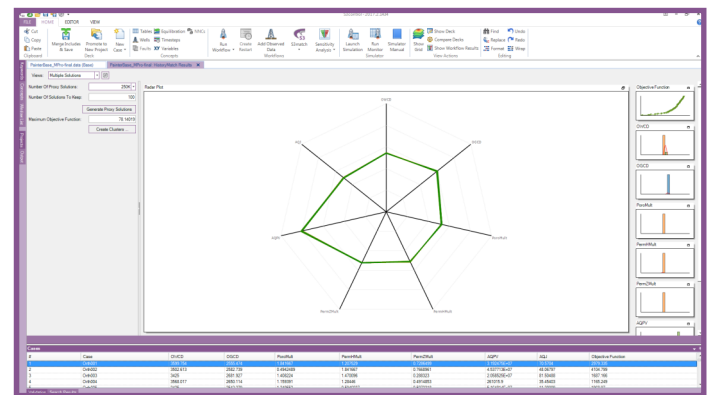
S3match is an assisted history matching (HM) tool which is easy to use, powerful, fast and cost-effective. It allows engineers to set-up history matching runs quickly by means of its observed data import wizard and via its simple dialogue box driven process to add parameters and define the objective function. **S3match** finds the match very efficiently, using a proprietary 3-stage matching process of Scoping, Investigation and Minimisation.

BENEFITS

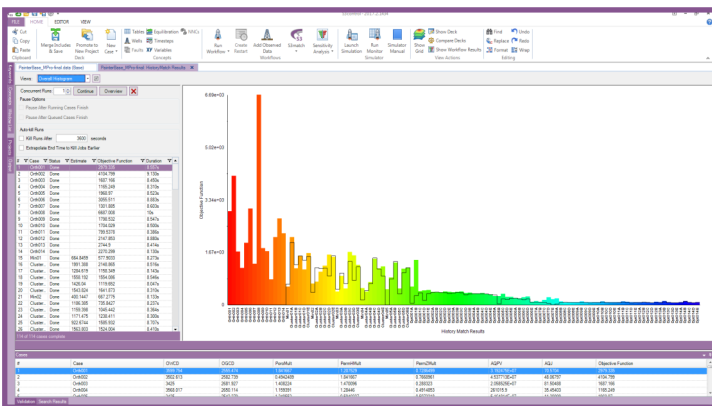
- Easy to use
- Powerful
- Cost-effective
- Finds matches with fewer runs
- Fully integrated into Sciencessoft workflow (add-on module to **S3control**)



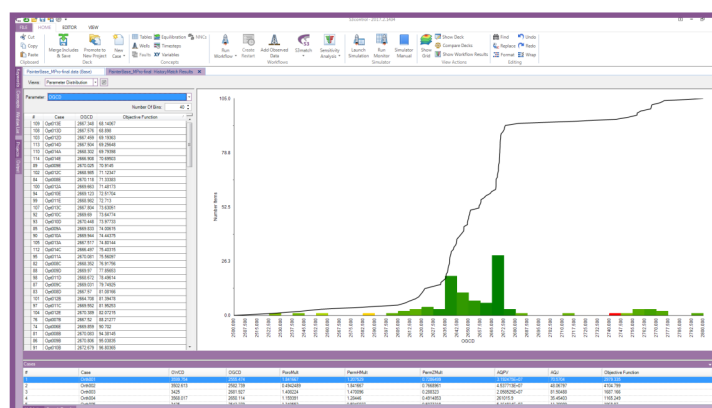
Mismatch Plots



Multiple Solutions: Parameter Radar Plot



Objective Function Histogram



Parameter Distribution Plots

KEY FEATURES

- Works with Eclipse (other simulators coming soon)
- Can find solutions with a large number of parameters
- Generates multiple solutions and quantifies uncertainty
- Result analysis as match progresses
 - Early assessment, termination, reassess parameters
 - Detailed results view for field, groups and wells
- Histogram, Mismatch Plots, Parameter Distributions
- Matches against all production, injection and pressure data
- Standalone execution or LSF
- Use of Parallel/Multiple Realisation (many runs at once)
- Recognises a variety of unit formats and converts “on the fly” - no need for manual conversion
- Easy creation of Objective Function—Wells Terms and Error Terms with set defaults
- User can choose how many runs take place in each of the 3 matching stages of Scoping, Investigation and Minimisation
- Matching process uses Artificial Neural Network (ANN) and Genetic Algorithm (GA) Techniques



Sciencessoft Ltd
Moorpark House
11 Orton Place
Glasgow
G51 2HF

tel. +44 (0)141 445 0330
fax. +44 (0)141 445 2041
e-mail - sales@sciencessoft.com
website - www.sciencessoft.com

